

# SALIQO<sup>+</sup>VIEW™

## Product Catalogue

**SALIQO View™** stands as SALIQO's dedicated display technology division, focused on the design and manufacturing of high-performance LED and LCD display systems.

Built on strong engineering and long-life reliability, **SALIQO View** delivers scalable visual solutions for commercial, industrial, and mission-critical applications. Supporting clear communication, real-time visibility, and future-ready digital infrastructure.

*“Standard Brand of Vision. Delivers Precision in Every Motion.”*

Powered By: **SALIQO**

Designed in 

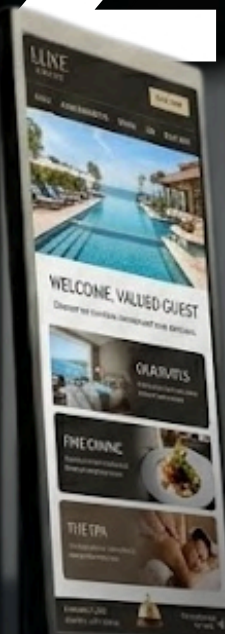
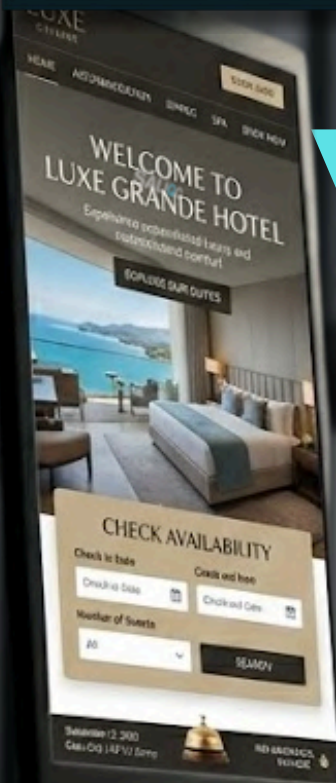


**SALIQO<sup>+</sup>VIEW™**

**LCD  
DISPLAYS**

# SALIQO<sup>+</sup>VIEW™

# viZON



## viZON | Quick Specs

**Display:** 4K Ultra-HD / High-Ambient Clarity.


**Touch:** 10-Point PCAP Multi-Touch.

**Build:** Slim Aerospace-Grade Aluminum.

**Connectivity:** Integrated Wi-Fi & 5G-Ready.

**Durability:** 24/7-Rated Shatter-Proof Glass.

Give Your Brand  
the **ViSUAL**  
it Deserves.

Designed in 

# SALIQO<sup>+</sup>VIEW™

## ViXEL | Quick Specs

**Display:** 4K Ultra-HD / High-Ambient Clarity.

**Touch:** 10-Point PCAP Multi-Touch.

**Build:** Slim Aerospace-Grade Aluminum.

**Connectivity:** Integrated Wi-Fi & 5G-Ready.

**Durability:** 24/7-Rated Shatter-Proof Glass.

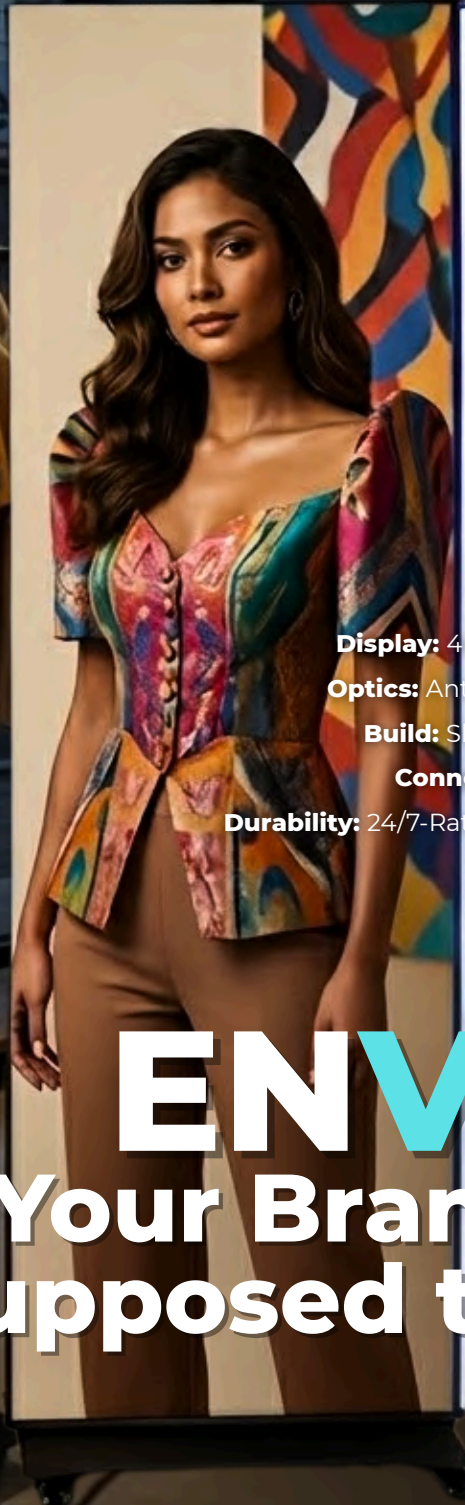
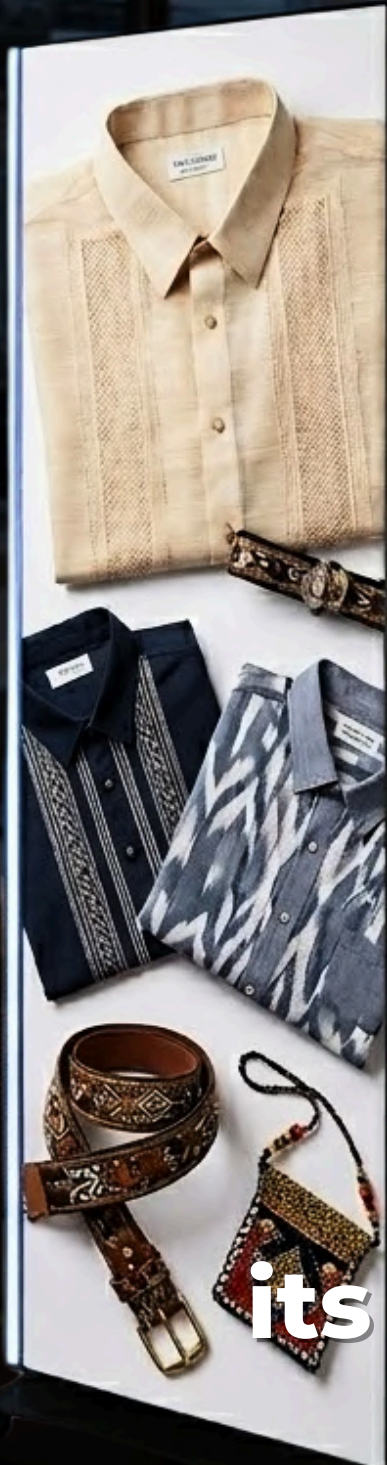
# ViXEL

The **Vi**EWPOINT  
Towards the Right Path.

Designed in 

# SALIQO<sup>+</sup>VIEW™

# viXOR



## viXOR | Quick Specs

**Display:** 4K UHD / 700-Nit High-Brightness Panel.

**Optics:** Anti-Glare / 178° Ultra-Wide Viewing Angle.

**Build:** Slim Aerospace-Grade Aluminum Frame.

**Connectivity:** Integrated Wi-Fi 6 & 5G-Ready.

**Durability:** 24/7-Rated Commercial-Grade Tempered Glass.

# ENViSION

Your Brand the way  
its supposed to be seen.

Designed in 

# SALIQO<sup>+</sup>VIEW™

# ViZEN

## ViZEN | Quick Specs

**Display:** 4K UHD / 500-Nit Commercial High-Output Panel.

**Optics:** 1% Haze Low-Reflection / 178° IPS Wide-Angle View.


**Build:** Slim-Bezel Metallic Body with Integrated Stability Base.

**Connectivity:** Dual-Band Wi-Fi 5 & Gigabit Ethernet (RJ45).

**Durability:** 24/7-Rated Performance / 4mm Impact-Resistant Toughened Glass.

Display what you want  
people to **Vi**SUALIZE.



Designed in 

# SALIQO<sup>+</sup>VIEW™

## An INVITATION to Modern Discovery.

# viON

### viON | Quick Specs

**Display:** 4K UHD / 800-Nit Ultra-Brightness Interactive Panel.

**Optics:** Anti-Glare / 178° Wide-Angle Low Blue Light Screen.

**Build:** Reinforced Ergonomic White Poly-Coated Steel Frame.

**Connectivity:** High-Speed Wi-Fi 6E & Dual-Band Bluetooth 5.2.

**Durability:** IP54-Rated Water-Resistant / 8H Scratch-Proof Tempered Glass.

Designed in 

# SALIQO<sup>+</sup>VIEW™

# ViSTRA



**ELEVÉ**  
PARFUMS  
A SYMPHONY OF SCENTS

LIMITED EDITION COLLECTION - 100ML  
EXPERIENCE THE ART OF LUXURY

## ViSTRA | Quick Specs

**Display:** 4K UHD / 800-Nit Ultra-Brightness Interactive Panel.

**Optics:** Anti-Glare / 178° Wide-Angle Low Blue Light Screen.

**Build:** Reinforced Ergonomic White Poly-Coated Steel Frame.

**Connectivity:** High-Speed Wi-Fi 6E & Dual-Band Bluetooth 5.2.

**Durability:** IP54-Rated Water-Resistant / 8H Scratch-Proof Tempered Glass.

Show the **ViTAL** Details.  
Promote the Total Picture.

Designed in 

# SALIQO<sup>+</sup>VIEW™

## ViBEX | Quick Specs

**Display:** 4K UHD / 500-Nit Contrast.

**Optics:** Precision Calibration / 178° View.

**Build:** Modular / Impact-Resistant Glass.

**Connectivity:** Plug-and-Play / Cloud CMS.

**Durability:** 60,000h Life / Thermal Managed.

# viBEX


## SAMSUNG



INTRODUCING  
Galaxy S24 Ultra  
EXPERIENCE THE NEW ERA.

**DISPLAY**  
PRE-ORDERS NOW

Digital **VITALIZATION**.  
Don't settle for the ordinary.

Designed in 

# SALIQO<sup>+</sup>VIEW™

## A **Vi**SION Brand Without Borders.



# ViREX

### ViREX | Quick Specs


**Display:** 360° Seamless LED / 800-Nit Brightness.

**Optics:** Anamorphic-Ready / High-Contrast 3D Perspective.

**Build:** Curved Chassis with Mobile Pedestal.

**Connectivity:** Wireless Sync / Real-Time Remote CMS.

**Durability:** IP65 Weather-Resistant / Impact-Resistant Shield.

Designed in 

# SALIQO<sup>+</sup>VIEW™

# ViDIUM

## ViDIUM | Quick Specs

**Display:** 32" Front LED / 22" Capacitive Touch.

**Optics:** IPS / 178° Ultra-Wide Viewing Angle.

**Build:** Heavy-Duty Metal / Locking Caster Wheels.

**Connectivity:** 4x4 HDMI Matrix / Dual UHF Wireless.

**Durability:** Commercial-Grade / Optically Bonded Surface.

Don't just speak of Message.  
Let them see the **ViSION.**

Designed in 

# SALIQO<sup>+</sup>VISTA™



## ViSTA | Quick Specs

**Display:** 32" / 43" / 55" 4K UHD Ultra-High Definition Panel.

**Optics:** 2500-Nit Ultra-High Brightness / 178° View Angle.

**Build:** Lightweight Die-Cast Aluminum Frame with Mobile Round Base.

**Connectivity:** Cloud-Based Remote Management / Wi-Fi & 4G Support.

**Durability:** IP66 Weatherproof Rated / 24/7 Commercial Operation.


# ViSTA

## LUXURY HOTEL: GRAND OPULENCE RESIDENCE (UNDER CONSTRUCTION)

- \* Architectural Elegance
- \* Grandiose Interior Finishes
- \* Planned Infinity Pool & Spa
- \* Completion Target: Q4 2026

GRAND OPULENCE RESIDENCE  
DEFINING LUXURY HOSPITALITY  
CONSTRUCTION

**ViSIBLE Perspectives**  
**in Every Single Room.**

Designed in 





# POPULAR APPLICATIONS

Widely use for shops, hotel, wedding, meeting guidance, new product presentation, auto car 4S shop, etc.



**SALIQO<sup>+</sup>VIEW™**

**LED  
DISPLAYS**

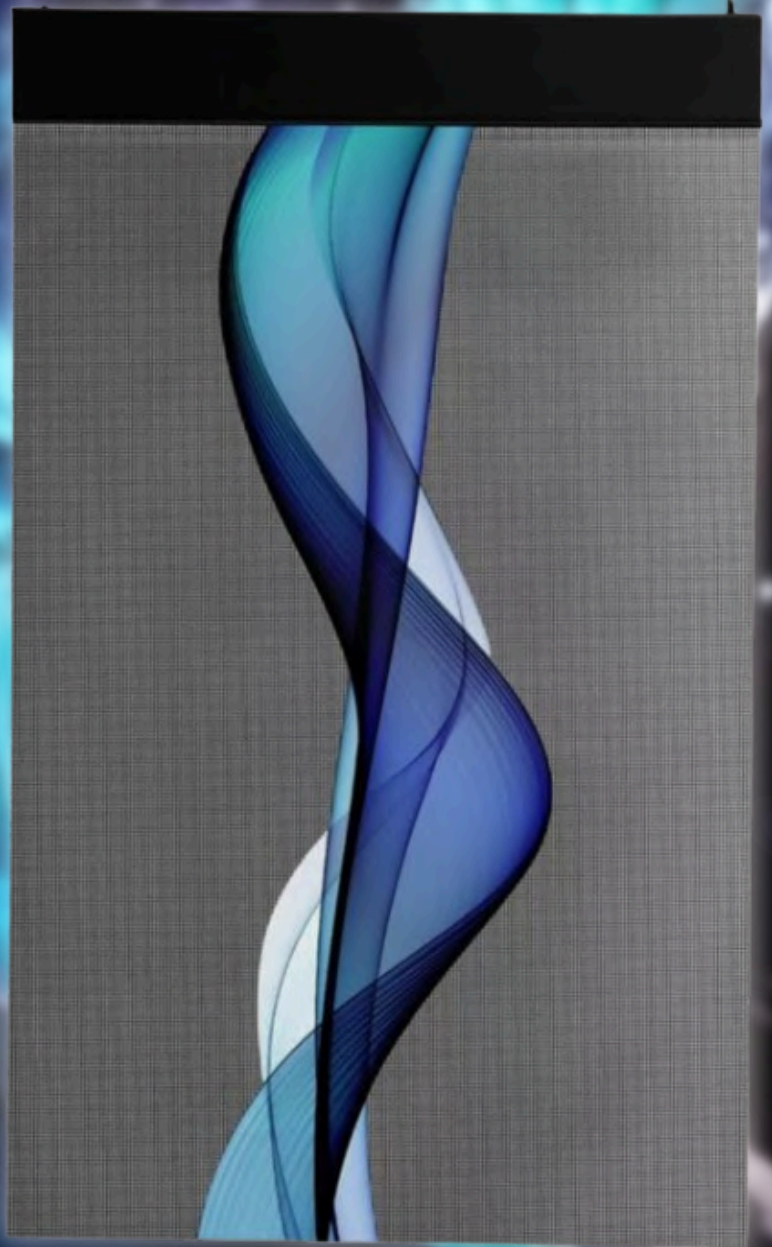


# SALIQO<sup>+</sup>VUE™



- Ultra-thin. Flexible. Lightweight.
- Fully transparent when off — no physical presence.
- Eye-catching 3D, holographic, and transparent video capability.
- Custom-fit like a phone film — just stick and play!
- Perfect for malls, retail stores, showrooms, trade exhibits, and modern offices.

# SALIQO<sup>+</sup>VUEW™



High Visual Holographic Invisible  
Transparent LED Film Display

# SALIQO<sup>+</sup>VIEW™

## NEXUS CONNECT

### SALIQO LED™

# ViWOL

#### ViWOL | Quick Specs

**Module:** Fine-Pitch Direct View LED.

**Optics:** High Contrast / Seamless Bezel-less.

**Build:** Rigid Die-Cast Aluminum Cabinets.

**Install:** Stacked & Flown / Front Service.

**Rating:** 24/7 Commercial / High Brightness.

Designed in 

# SALIQO<sup>+</sup>VIEW™

## ViSLE | Quick Specs

**Display:** 3D Holographic / Micro-LED.

**Optics:** 95% Transparent / Ultra-Wide View.

**Build:** < 2mm Thin / Flexible Nano-Film.

**Install:** Stick & Play / Custom-Cut.

**Rating:** 24/7 Commercial / Low Power.



STEP INTO  
SUMMER  
- NEW COLLECTION!


₱64,500  
₱110,300

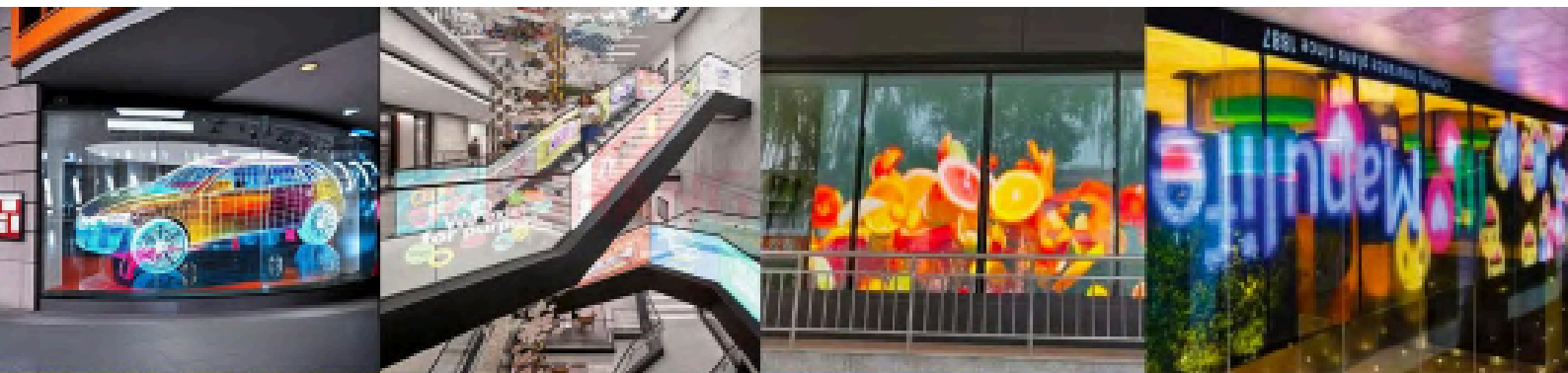
KICKS  
PHILIPPINES



ViSLE  
SALIQO LED™

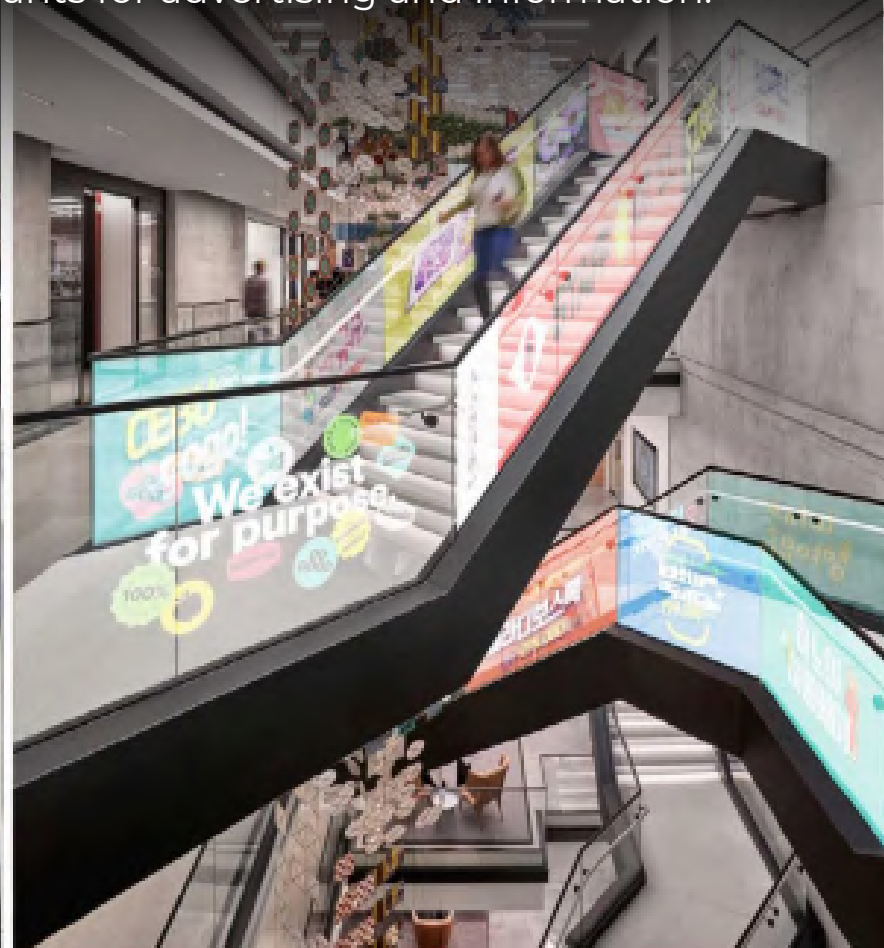


Designed in 



# POPULAR APPLICATIONS

LED displays are widely used in retail shops, hotels, weddings, meeting rooms, car dealerships, and restaurants for advertising and information.



# Interactive & Collaborative Solutions



**ViZON**

**ViSENT**

**ViXEL**

**ViON**

These products are designed for two-way engagement, featuring touchscreens and software intended for corporate meetings, data manipulation, or guided information.

**ViZON** (Stand-Alone Kiosk)  
Premium branding in luxury business with minimal footprint.

**ViXEL** (Wayfinding Kiosk)  
Public navigation and information hubs in high-traffic areas.

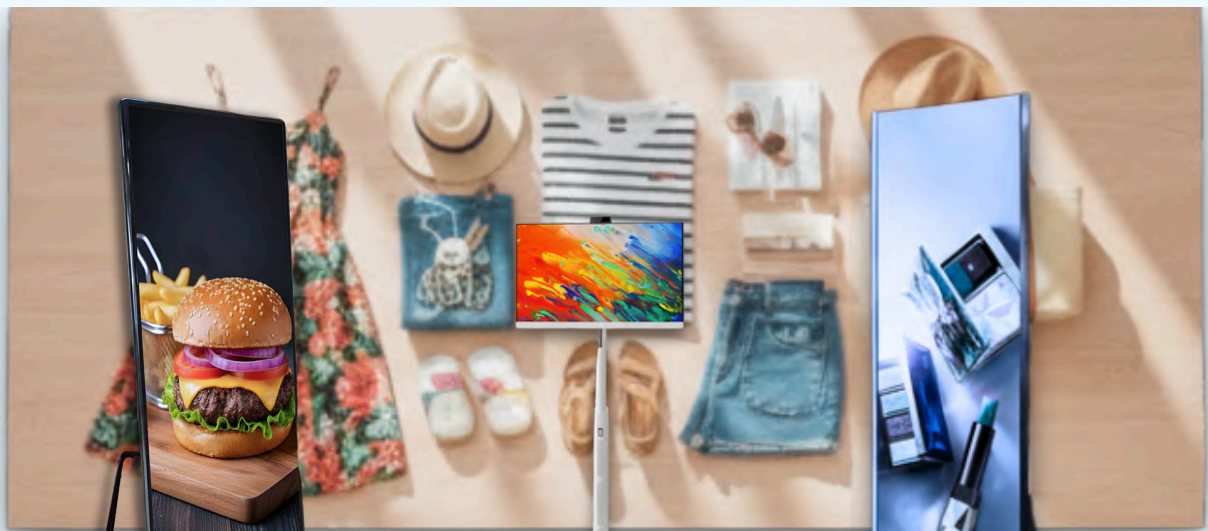
**ViSENT** (Mobile Whiteboard)  
High-level corporate meetings and data-heavy presentations.

**ViON** (Interactive Coffee Table)  
Horizontal collaborative interface for social or lounge settings.

# High-Impact Branding & Advertising

(Visual-First)

**vi**STRA



**vi**ZEN

**vi**STA

**vi**XOR

These displays are "passive" marketing tools optimized for maximum visibility and high-definition content delivery in public environments.

**vi**STRA (Modular Video Wall)  
Large-scale cinematic storytelling for flagship stores and HQs.

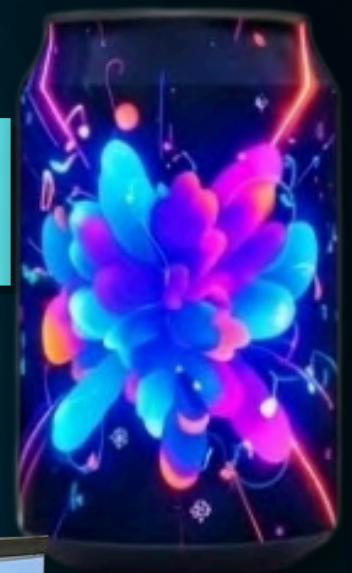
**vi**STA (Interactive Lifestyle Display)  
Versatile, adjustable screen for personal use or high-end consultations and presentations.

**vi**ZEN (Ultra-Slim Digital Signage)  
Digital menu boards and sleek indoor messaging for F&B or retail.

**vi**XOR (Digital Totem)  
High-impact advertising in mall walkways and bidirectional corridors.

# Specialized & Event-Based Solutions

This category focuses on Specialized & Event-Based Solutions. Engineered for high-pressure, professional environments where capturing attention and rapid deployment are the top priorities.



**ViREX**

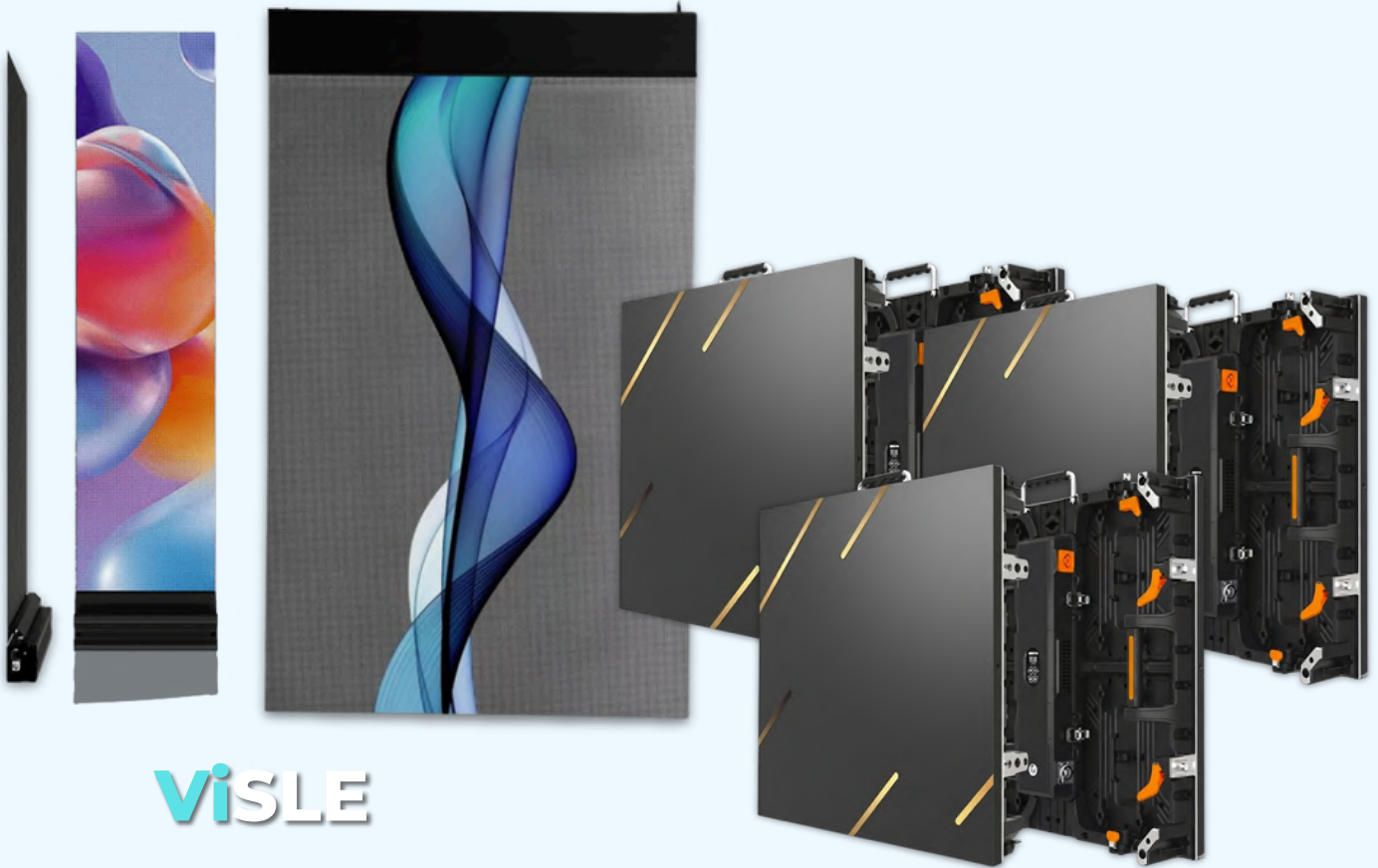
**ViDIUM**



**ViDIUM** (Digital Presentation)  
Lectern High-end corporate keynotes and conferences with audience-facing messaging.

**ViREX** (360° Cylindrical LED Display)  
Immersive, wrap-around branding for festivals and center-stage events.

**ViBEX** (Mobile LED Cube/Cart)  
High-precision 3D visuals for trade shows and exhibitions.



**ViSLE**

**ViWOL**

# Direct-View LED (DVLED) Systems

This category delivers seamless, bezel-free technology ranging from transparent films to modular walls. It is perfect for flagship retail and large-scale projects where scale and clarity are paramount.

**ViSLE** (Holographic / Micro-LED Film)

Retail window displays and high-transparency installations. 95% transparent optics, flexible nano-film build (< 2mm thin), and stick-and-play installation.

**ViWOL** (Direct View LED Wall)

Large-scale indoor events, stages, and high-brightness commercial spaces. Fine-pitch module, seamless bezel-less optics, and rigid die-cast aluminum cabinets.

# Interactive & Collaborative Solutions



**ViZON**

**ViSENT**

**ViXEL**

**ViON**

These products are designed for two-way engagement, featuring touchscreens and software intended for corporate meetings, data manipulation, or guided information.

**ViZON** (Stand-Alone Kiosk)  
Premium branding in luxury business with minimal footprint.

**ViXEL** (Wayfinding Kiosk)  
Public navigation and information hubs in high-traffic areas.

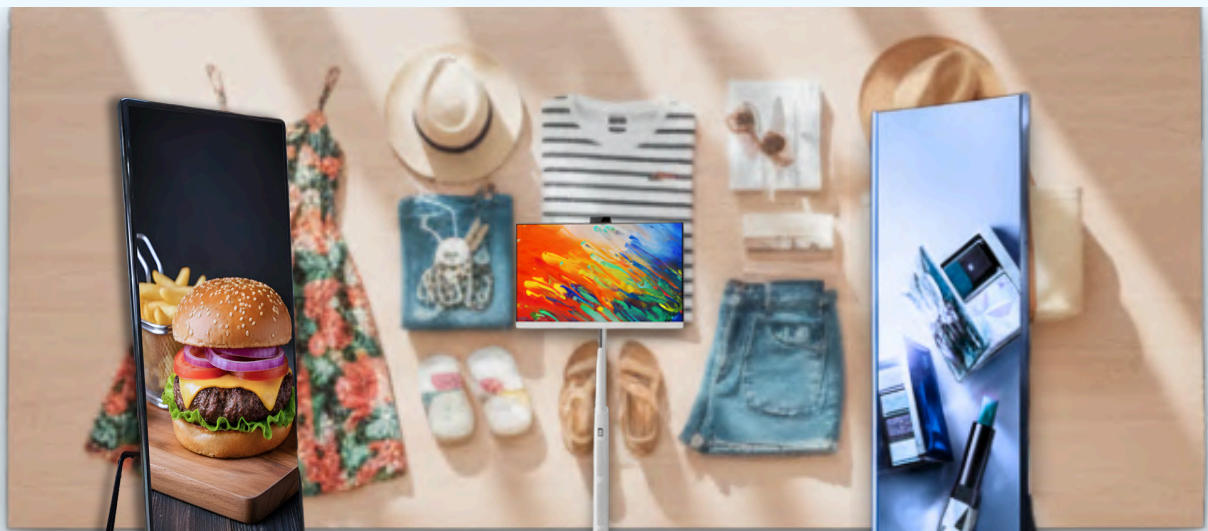
**ViSENT** (Mobile Whiteboard)  
High-level corporate meetings and data-heavy presentations.

**ViON** (Interactive Coffee Table)  
Horizontal collaborative interface for social or lounge settings.

# High-Impact Branding & Advertising

(Visual-First)

**vi**STRA



**vi**ZEN

**vi**STA

**vi**XOR

These displays are "passive" marketing tools optimized for maximum visibility and high-definition content delivery in public environments.

**vi**STRA (Modular Video Wall)  
Large-scale cinematic storytelling for flagship stores and HQs.

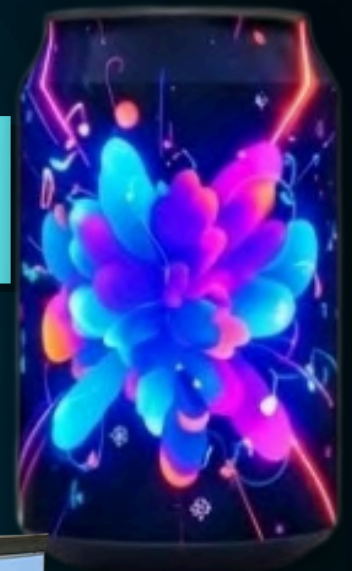
**vi**STA (Interactive Lifestyle Display)  
Versatile, adjustable screen for personal use or high-end consultations and presentations.

**vi**ZEN (Ultra-Slim Digital Signage)  
Digital menu boards and sleek indoor messaging for F&B or retail.

**vi**XOR (Digital Totem)  
High-impact advertising in mall walkways and bidirectional corridors.

# Specialized & Event-Based Solutions

This category focuses on Specialized & Event-Based Solutions. Engineered for high-pressure, professional environments where capturing attention and rapid deployment are the top priorities.



**ViREX**

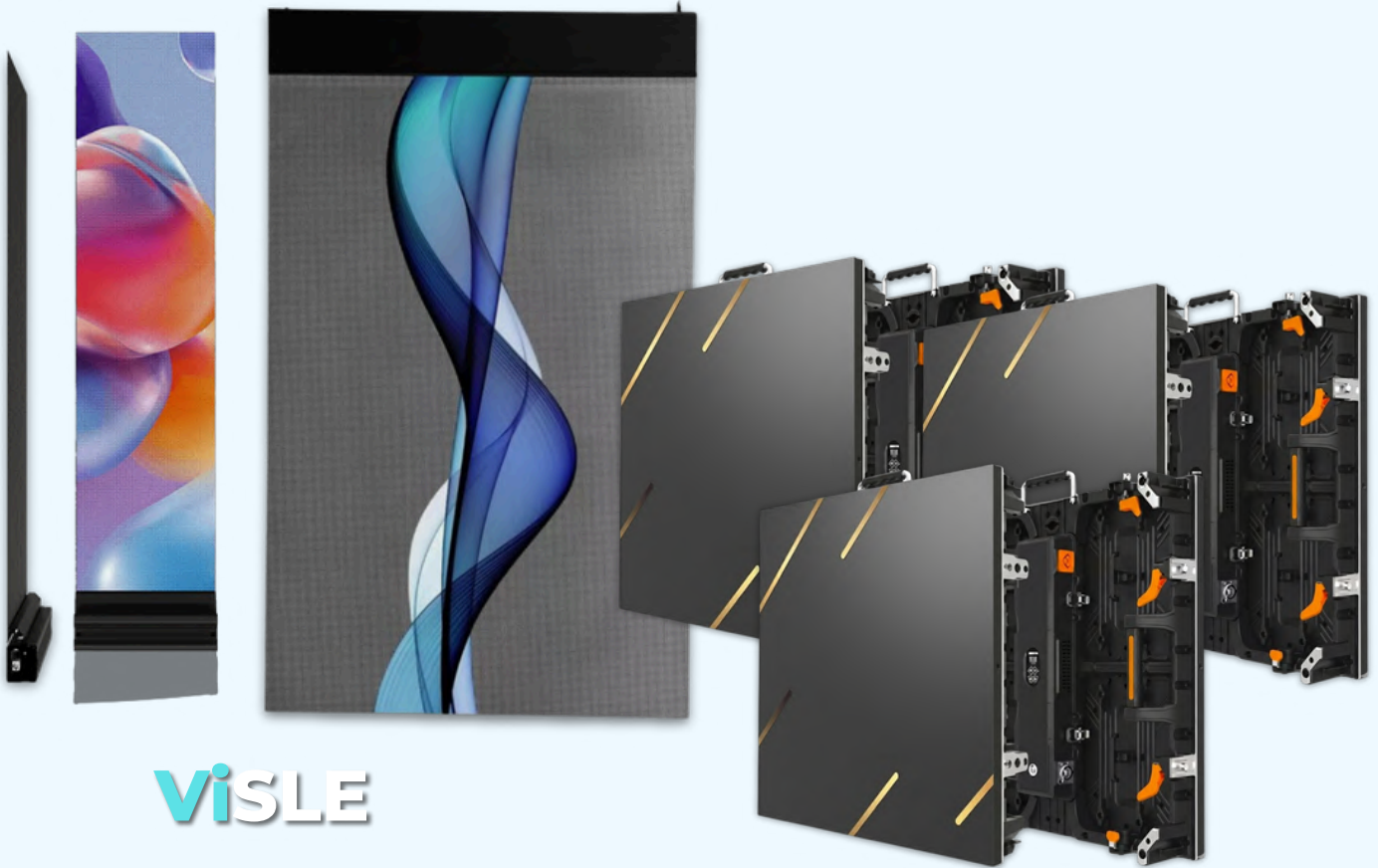
**ViDIUM**



**ViDIUM** (Digital Presentation)  
Lectern High-end corporate keynotes and conferences with audience-facing messaging.

**ViREX** (360° Cylindrical LED Display)  
Immersive, wrap-around branding for festivals and center-stage events.

**ViBEX** (Mobile LED Cube/Cart)  
High-precision 3D visuals for trade shows and exhibitions.



**ViSLE**

**ViWOL**

# Direct-View LED (DVLED) Systems

This category delivers seamless, bezel-free technology ranging from transparent films to modular walls. It is perfect for flagship retail and large-scale projects where scale and clarity are paramount.

**ViSLE** (Holographic / Micro-LED Film)

Retail window displays and high-transparency installations. 95% transparent optics, flexible nano-film build (< 2mm thin), and stick-and-play installation.

**ViWOL** (Direct View LED Wall)

Large-scale indoor events, stages, and high-brightness commercial spaces. Fine-pitch module, seamless bezel-less optics, and rigid die-cast aluminum cabinets.

# SALIQQO



**SALIQQO<sup>+</sup>Solar<sup>TM</sup>**

**SALIQQO<sup>+</sup>EV<sup>TM</sup>**

**SALIQQO VIEW<sup>TM</sup>**

**SALIQQO<sup>+</sup>Safe<sup>TM</sup>**

**SALIQQO<sup>+</sup>Gen<sup>TM</sup>**

# SALIQO VIEW™

## Product Catalogue

*“Standard Brand of Vision. Delivers Precision in Every Motion.”*

Designed in 

Powered By: **SALIQO**